

MTN 026 - Anorectal Examination and Sample Collection

Ross D. Cranston
Protocol Chair





Perianal exam



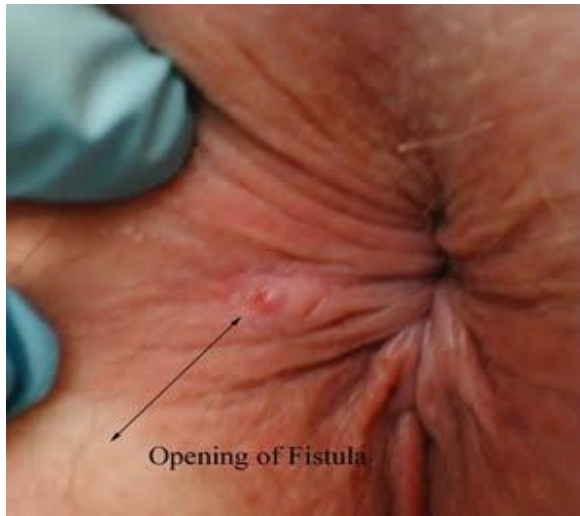
Haemorrhoids



**Traumatic
Ulceration**



Fissure



Fistula



Herpes Simplex



Abscess

Digital Rectal Exam

- Insert a Good Clean Love® lubricated gloved finger into the anal canal and sweep around the internal anal circumference
- In addition to defining any irregularities, this will relax the anal sphincter and allow easier passage of the anoscope

Standard Anoscopy

- Use the Good Clean Love[®] personal lubricant to lubricate the anoscope
- Insert the lubricated anoscope into the anal canal until the anoscope 'wings' touch the anal verge
- Remove the obturator
- Use a lighted instrument (e.g.otoscope or torch) to illuminate the rectum
- Visually assess the rectum, then after the swabs/sponges are taken, assess the anal canal as the anoscope is withdrawn

Anoscope



Ansocope



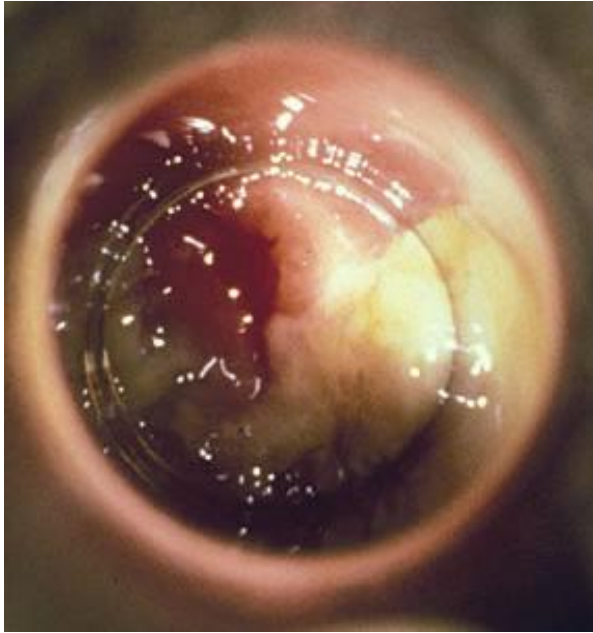
anal verge

Anoscope in situ





Rectal exam



Discharge




Proctitis



Hemorrhoids

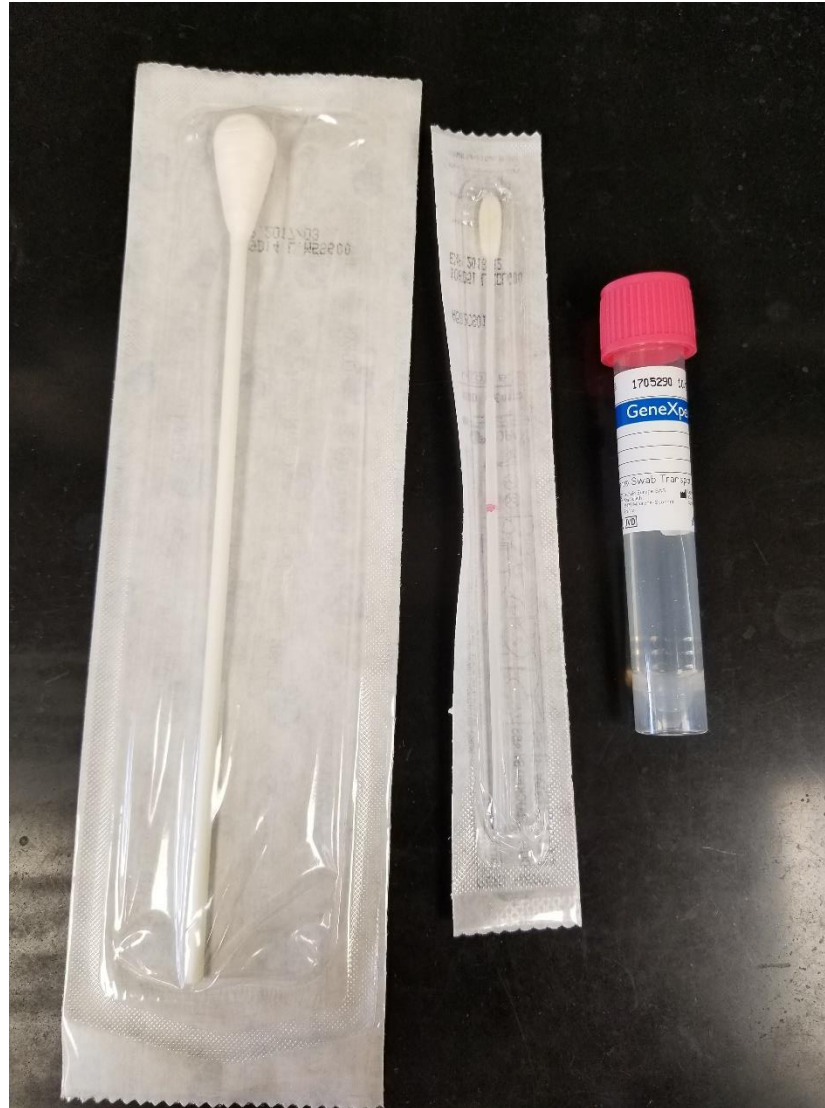
Specimen Collection

- GC CT
- Mucosal safety
 - Microflora swab
 - Sponge
- PK



GC CT

GeneXpert GC CT kit

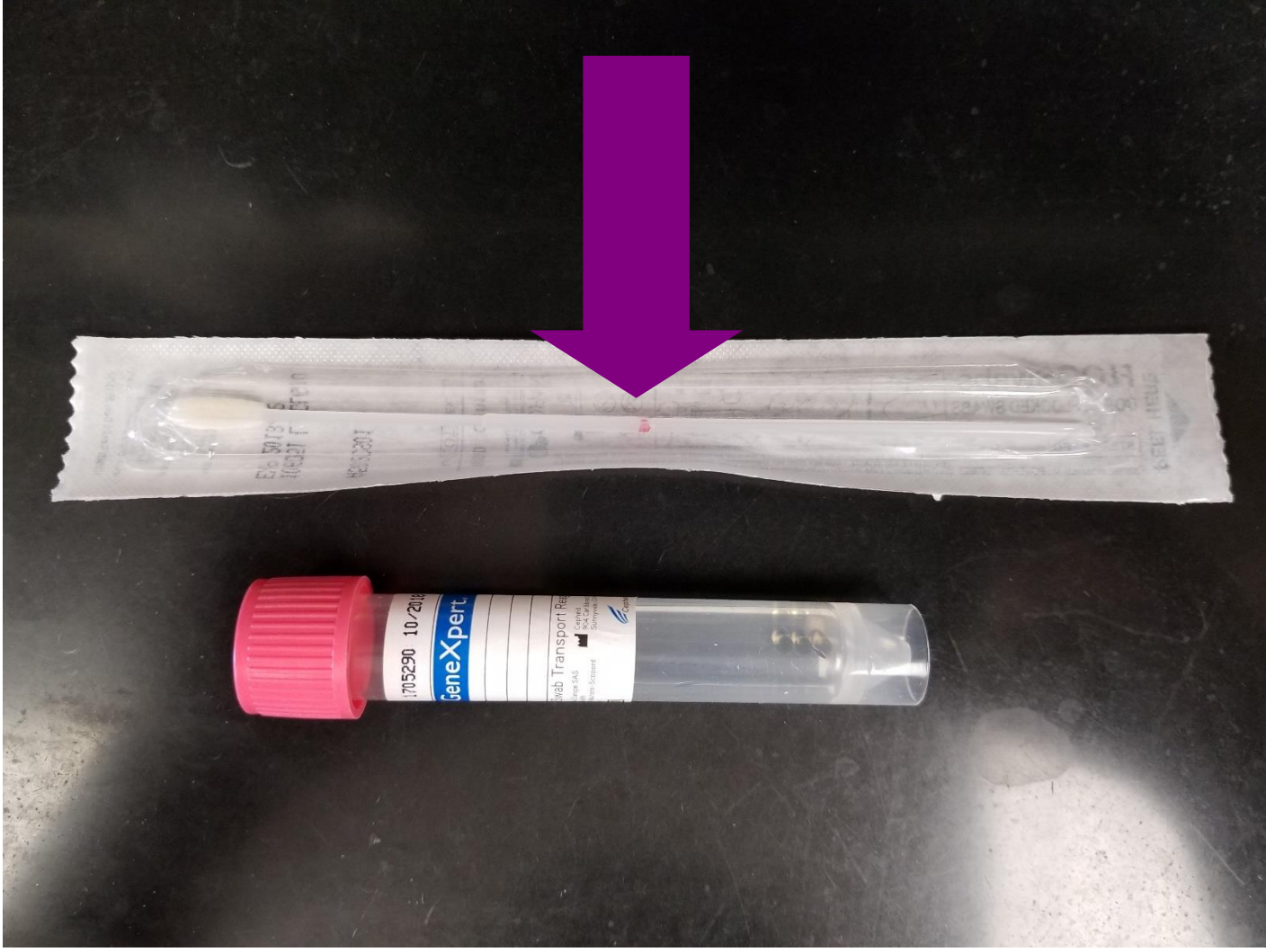


Rectal GC/CT Swab Collection

- Insert GeneXpert swab for GC/CT NAAT through the anoscope.
- Aim the swab into the center of the rectal tissue and roll it through 360 degrees.
- Withdraw the swab, and hand it to an assistant (you will need to keep the anoscope in place for further swabs)
- The swab should be snapped at the score line and placed in the transport tube and capped

Rectum (anoscope fully inserted)







Mucosal Safety

Swab and Collection Tube



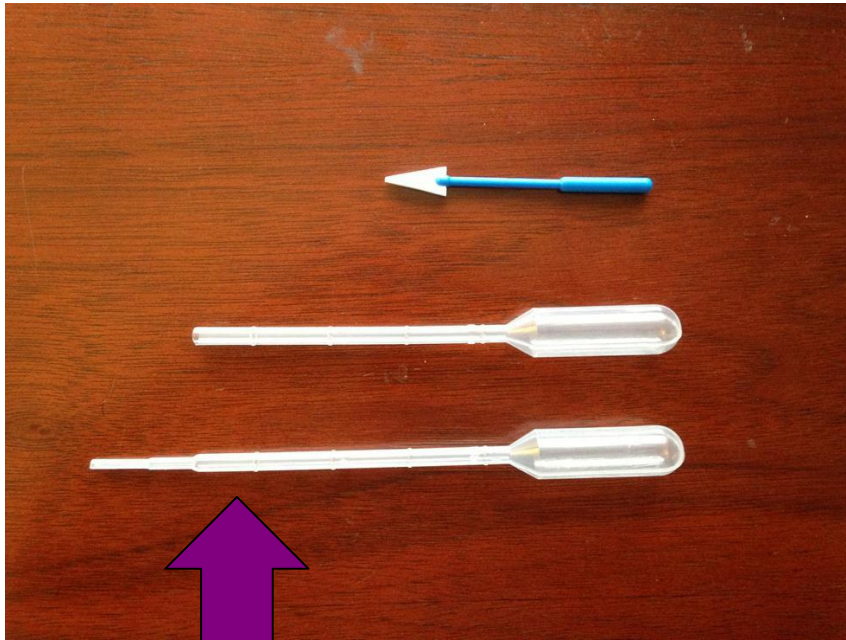
Rectum (anoscope fully inserted)



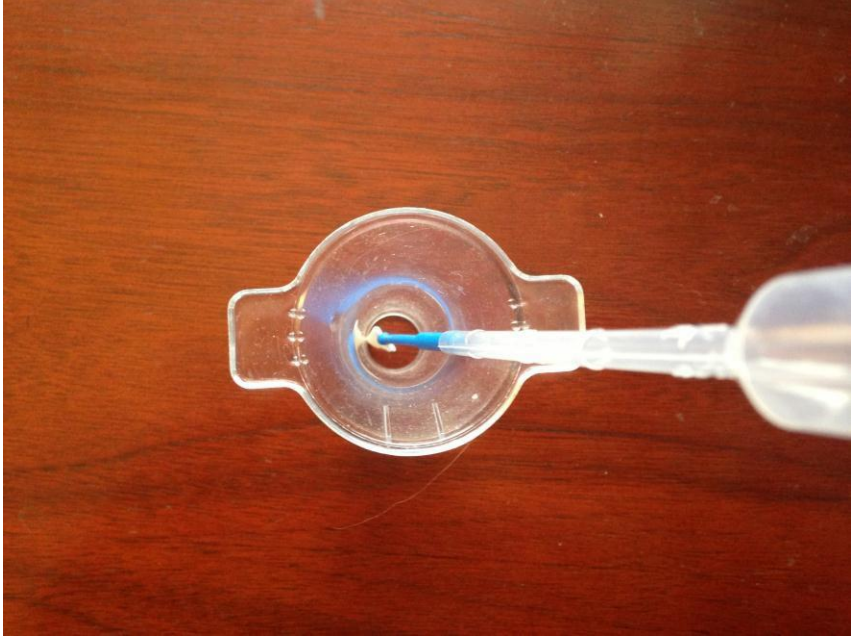
Microflora

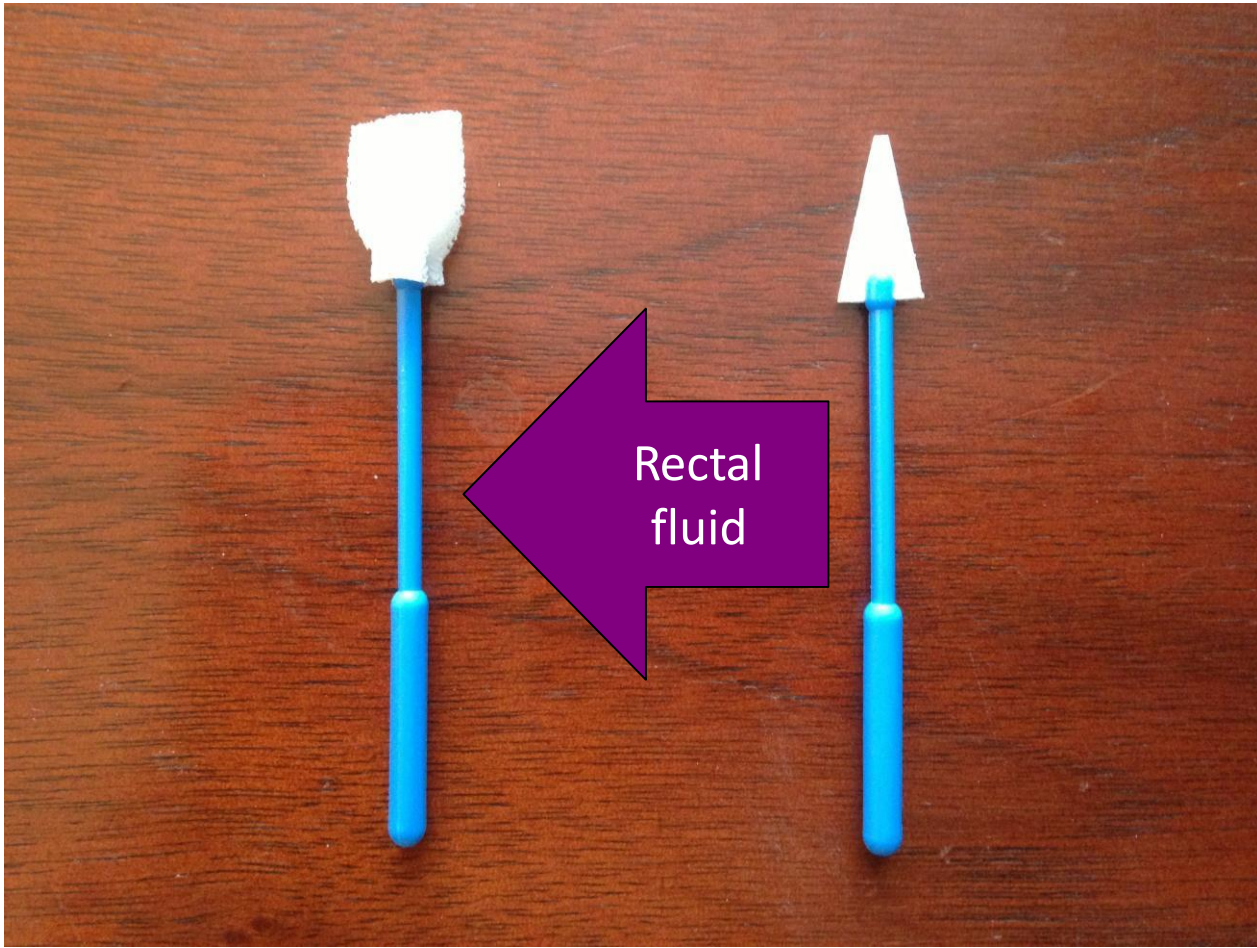
- Introduce the flocked nylon swab through the anoscope into the rectum.
- Rotate the flocked nylon swab along the lateral wall of the rectum several times.
- Withdraw the swab, and hand it to an assistant (you will need to keep the anoscope in place for further swabs)
- The swab should be snapped at the score line and placed in the transport tube and capped

Sponge for Safety Sample

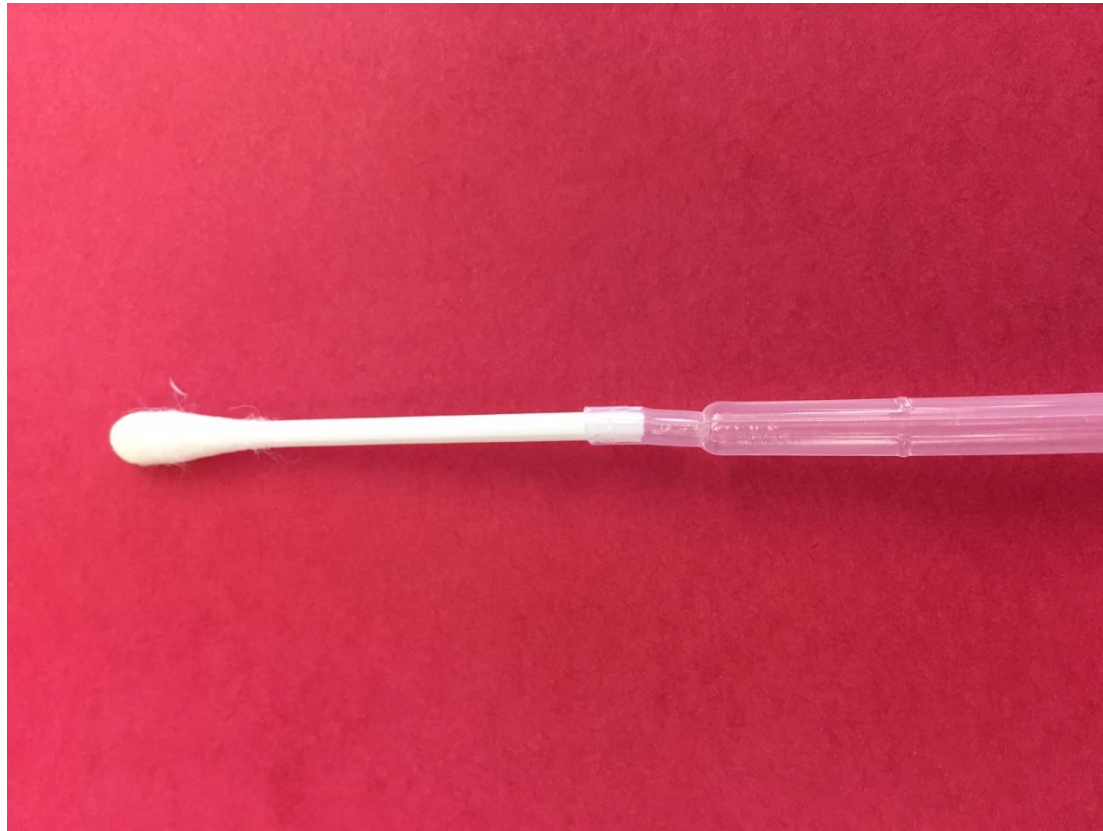


Cut in the middle of the 3rd gradation





Assembled Swab for PK



PK swab and Sponge Collection Method

- Introduce the sponge and swab, attached to their pipette holder extensions, into the proximal rectal lumen (in touch with the rectal wall)
- Hold (or leave) in place for 2 minutes
- Remove both and place them into the appropriate collection tubes

Anorectal Transition Zone





Thank You!